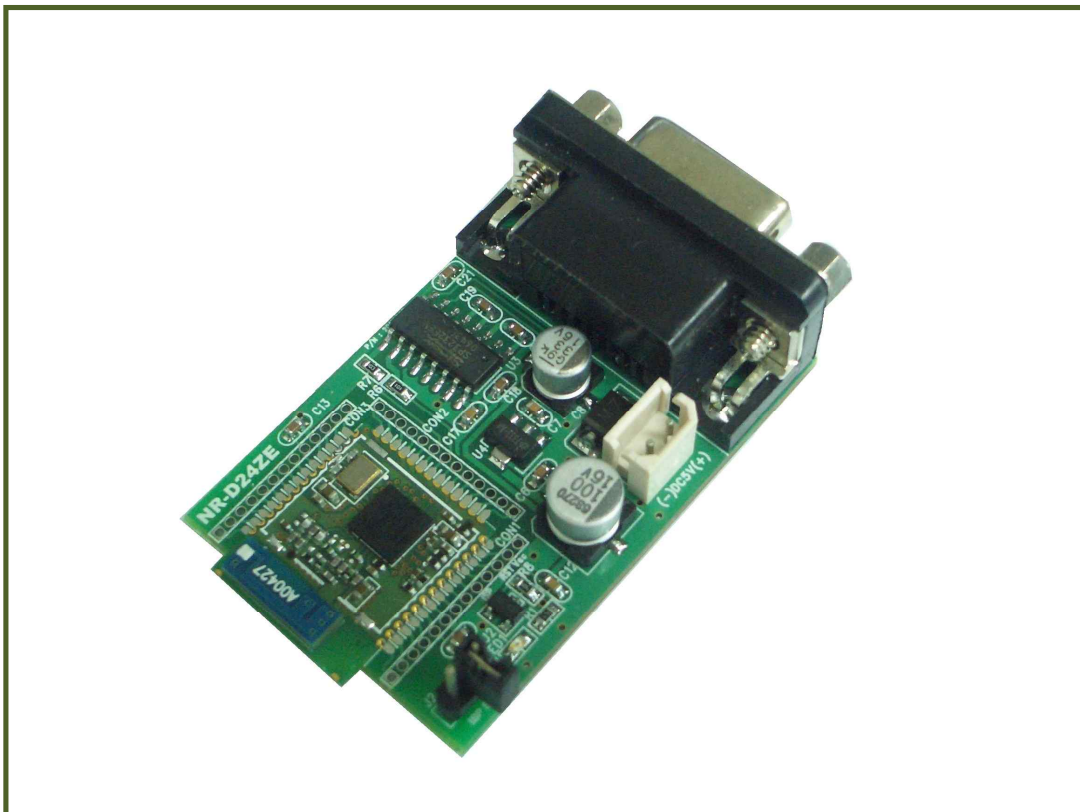


2.4GHz Wireless Data Transceiver Unit

Chip-Antenna or Connector Type

NR - D24ZE Ver 7.0

Related Products : NR-D24ZAM(2.4GHz Wireless Data Transceiver Module(Chip-Antenna))
NR-D24ZCM(2.4GHz Wireless Data Transceiver Module(Connector))



1. 2.4GHz Wireless Data Transceiver Unit.

- NR-D24ZE Unit is a wireless Data transceiver module that can Receive/Transmit computer Data and control electronic devices Data, Sensor Data.
- You Can Learn 2.4GHz Wireless data Communication from This Unit.
- Very Easy Interfacing User Computer(PC) (RS-232 Port Communication)
(please Connect RS-232 Level, Do not Connect TTL Level.)

2. Features.

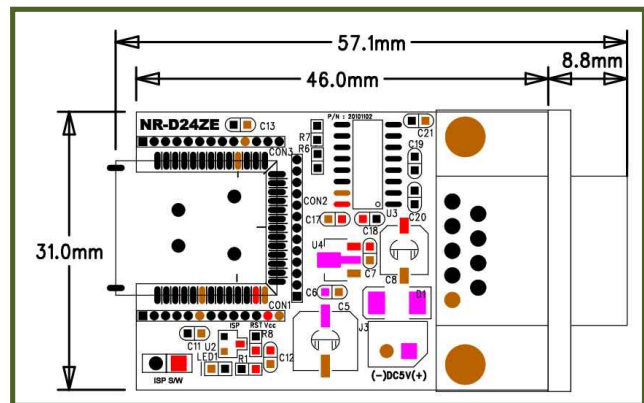
- You Can High Speed data Communication (RS-232 Interface).
- Use the 485 Communication if use Connect RS-232 to 485 Converter.
- Working power (DC 5V).

3. Applications

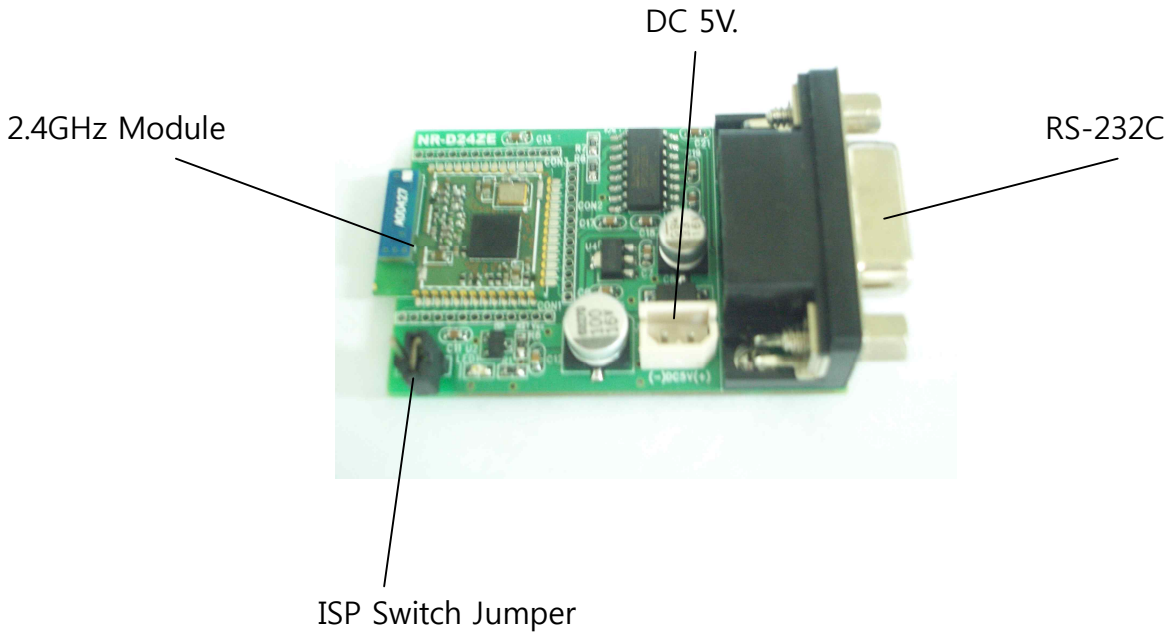
- TV, Lamp, Parking Area, Auto Door Remote Control.
- Office Automation, Home Automation.
- factory Automation, Device Remote Control, Sensor Control.
- Computer Data Wireless Communication.

4. 2.4GHz Wireless Data Transceiver Unit Specification.

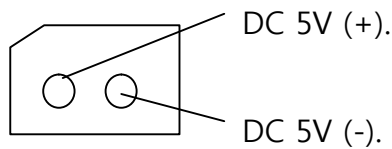
Item	Specification
Power	DC 5V
Current	Under 40mA
Interface Speed	9600-8-1-N
RF Speed	250K bps
Port	RS-232C



5. 2.4GHz Wireless Data Transceiver Unit Information.



* DC 5V : Input Power DC 5V.

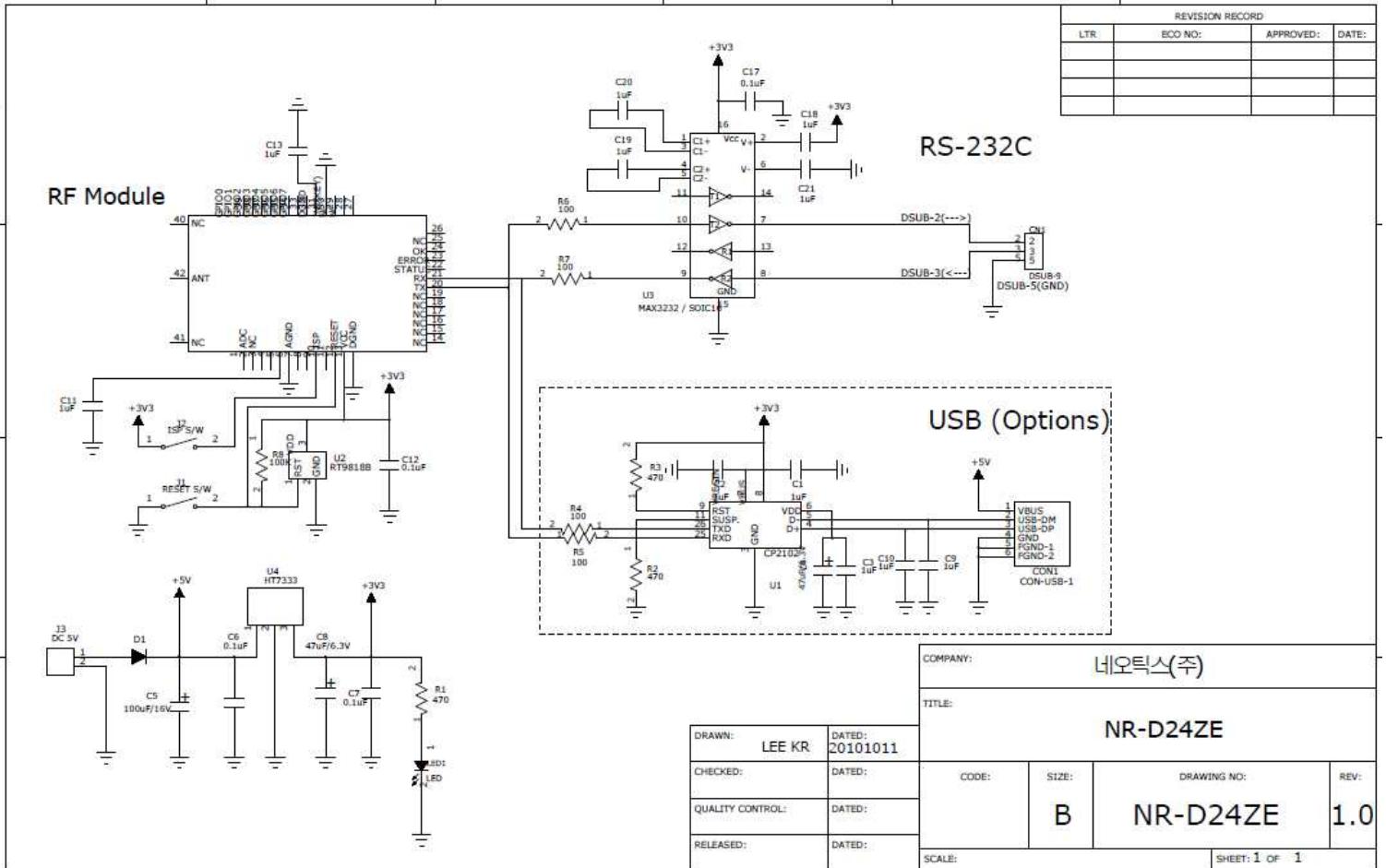


* 2.4GHz Module : 2.4GHz Module (NR-D24ZAM or NR-D24ZCM).

* RS-232C : Input Communication Data (9600-8-1-n)

* ISP Switch Jumper : Please ISP Switch Jumper ON(Connect) On the Module PCB, if Writing Program In Module (NR-D24ZAM or NR-D24ZCM).
(Do Not Use ISP Switch Jumper at Normal Time).

6. 2.4GHz Wireless Data Transceiver Unit Circuit.



***** Caution *****

1. Check the features first to connect with other equipment.
2. This circuit is strictly tested.
3. The developer, manufacturer or dealer is not responsible for any malfunctioning/damage caused by connection with other equipment.
4. Appropriate permit /approval is required for some products utilizing this module, depending on functions and usages.

● For more information and inquiry, please refer to the sites below.

R&D : <http://www.neotics.co.kr>
 Sales : <http://www.logiccamp.co.kr>

E-Mail : neotics@neotics.co.kr
 E-Mail : sales@logiccamp.co.kr