

PLL FM Stereo Radio(Transmitter) Unit

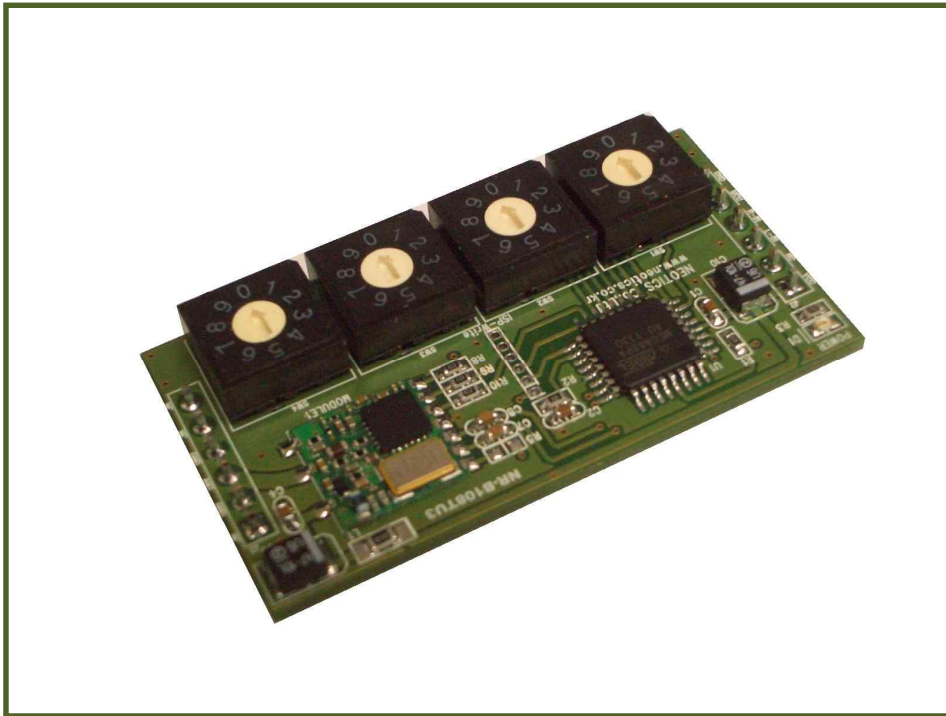
88MHz ~ 108MHz

NR – B108TU3 Ver 7.0

Related Products : NR-B108RM (PLL FM Stereo Radio Receiver Module)

NR-B108RU (PLL FM Stereo Radio Receiver Unit)

NR-B108TM3 (PLL FM Stereo Radio Transmitter Module)



1. PLL FM Stereo Radio(Transmitter) Unit.

- * NR-B108TU is a transmitter that can stereo transmit voice/music signals wirelessly to domestic FM Radios(Radio & Receiver).
- * While generally used transmitters work on a single or several pre-determined frequencies, NR-B108TU can transmit any stereo signals of any frequency within the range of 88-108MHz.
- * Miniature-sized to fit into any of your products, it is especially easy to install in electronic devices of compact size.
- * You can set transmit frequencies on 4 switches. ex) 82.6MHzset on 0, 8, 2 or 6.
- * You can set frequencies from MCU as well.
Set frequency select switch on 0000. ----> Transmit serial data 082.6M (9600,8,1,N)

2. Features.

- . Stereo transmission from all broadcast band(88-108MHz)
- . PLL system guarantees good frequency stability.
- . Miniature-sized(SMD Type), easy to apply to your products.
- . Controllable from CPU(MCU)-serial transmission.
- . Works on a single voltage DC 3.3V.

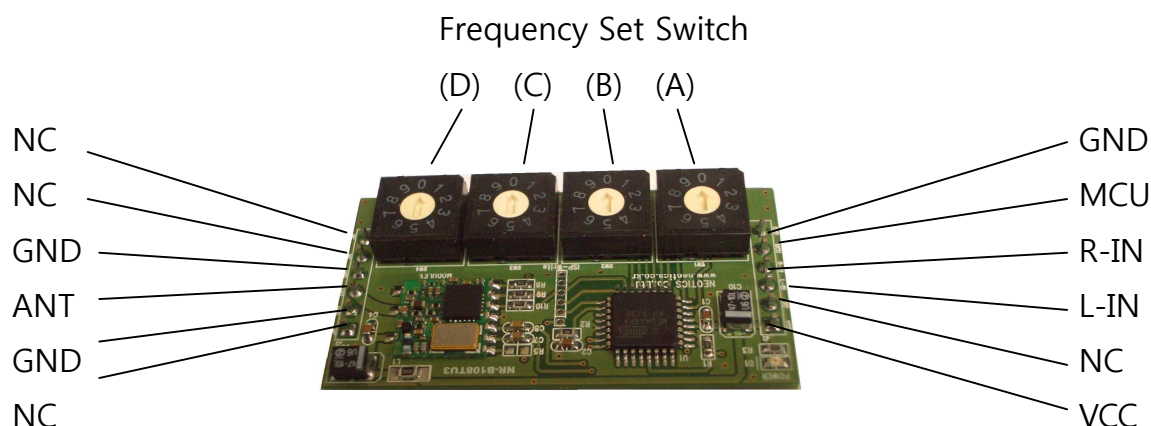
3. Applications

- . CD Changer, CAR TV, MP3, PDA.
- . Telephone & Mobile.
- . CAR Navigation, Wireless Speakers.
- . Personal Computer(Sound Board), Game machine.

4. PLL FM Stereo Radio(Transmitter) Unit Specification.

Item	Specification
Operating Voltage	DC 3.3V
Operating Current	Under 15mA
Transmission Frequency	88Mhz - 108Mhz
RF Output	Under -3dBm
Control	CPU(MCU) : 3-Wire Bus

5. PLL FM Stereo Radio(Transmitter) Unit Pin.



- . VCC : Power voltage DC 3.3V (+).
- . LEFT-IN : Left audio signal input.
- . RIGHT-IN : Right audio signal input.
- . MCU : Use when controlling by MCU (CPU).
- . GND : Power voltage DC 3.3V (-).
- . NC : Not in use.
- . ANT : Antenna terminal.
- . GND : Power voltage DC 3.3V (-).
- . Frequency Set Switch

	A	: 100MHz Count Frequency Set.
ex) 1 0 7 . 5MHz	B	: 10MHz Count Frequency Set.
A B C D	C	: 1MHz Count Frequency Set.
	D	: 100KHz Count Frequency Set.

*** How to input frequencies as serial from CPU(MCU) ***

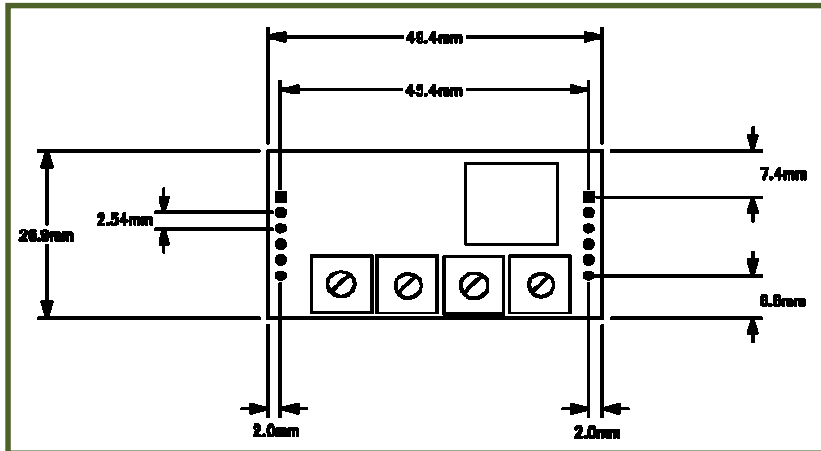
1. Set the frequency on "0000" when controlling from MCU.
2. Transmit to MCU control terminal as Serial Data (TTL level).

ex) Transmit frequency 82.6MHz.....Transmit "082.6M" from UART-Port TTL Level

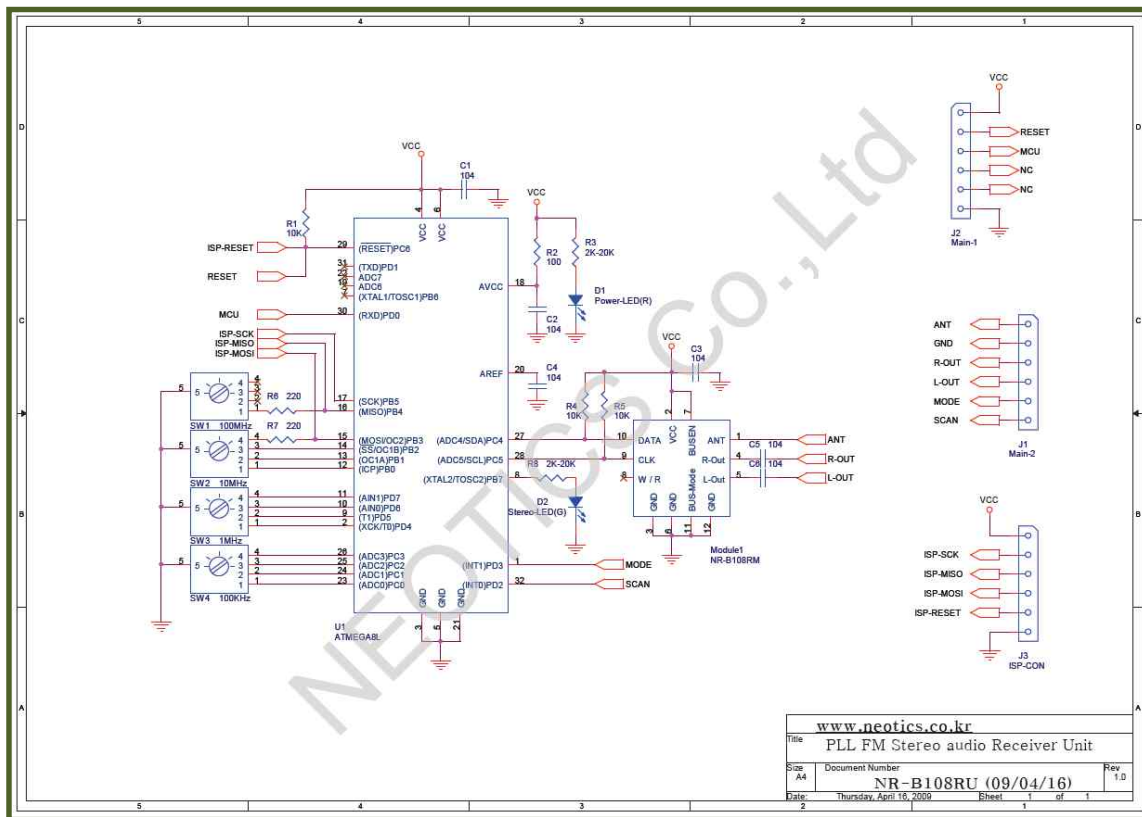
- . Please use the NR-B108 Only Antenna (PN-ANT-FM) or FM Frequency Antenna.
- . Use DC 3.3V for power (VCC)
- . R-IN/L-IN can be directly connected with line signal of TV, radio VTR etc.
- . In case of using condenser microphone, please input through microphone-amp circuit.

** If you get noise due to weak input signal, please connect pull up resistance to L-In/R-In as below.

6. PLL FM Stereo Radio(Transmitter) Unit Size.



7. PLL FM Stereo Radio(Transmitter) Unit Circuit.



***** Caution*****

1. Check the features first to connect with other equipment.
2. This circuit is strictly tested.
3. The developer, manufacturer or dealer is not responsible for any malfunctioning/damage caused by connection with other equipment.
4. Appropriate permit /approval is required for some products utilizing this module, depending on functions and usages.

- For more information and inquiry, please refer to the sites below.